

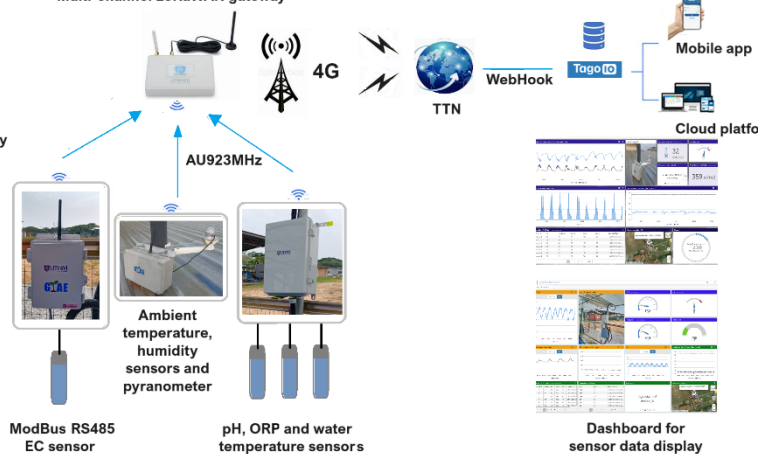
INTERNET-OF-THINGS WATER QUALITY SENSORS AND EDGE-AI FOR MICROALGAE BIOMASS PRODUCTION (UTHM-GIAE)

TRL-6

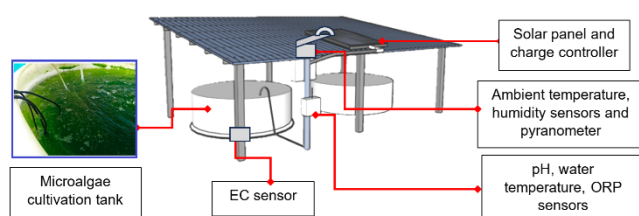
Security with AES encryption with changing AppID, DevID

LoRa AES security

Multi-channel LoRaWAN gateway



Harvested microalgae biomass



Student award: Top 2 in FKEE Fest

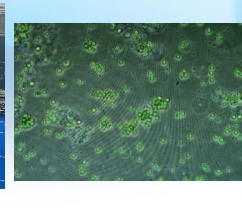
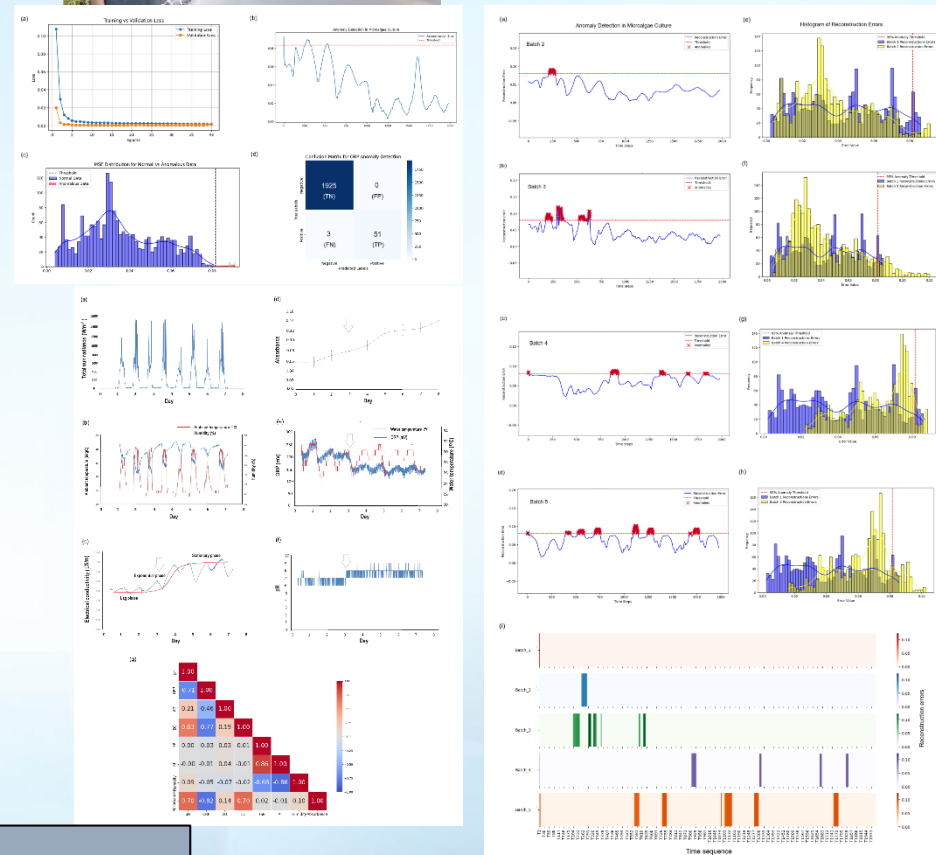


Skills that you will acquire:-

- IoT sensor circuit design.
- Semi-automation control.
- Real-time data collection.
- Long-term sensor technology applications.
- LSTM autoencoder for anomaly detection.
- Python programming and machine learning.
- Meeting industry's requirements.



Contact :
Ir. Dr. Soon Chin Fhong
FKEE/MiNT-SRC
Professor
 soon@uthm.edu.my



UTHM Johor www.uthm.edu.my
 Student award: Top 2 in IDP contest